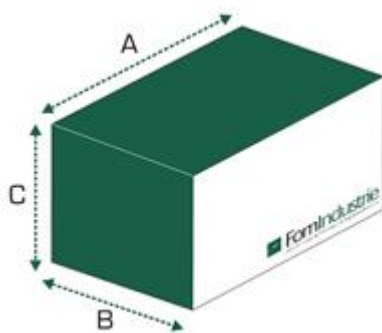


PANDA 550

Single head sawing machine with up-feed blade \varnothing 550 mm and manual positioning of the vertical axis



CE



A (mm)	B (mm)	C (mm)	Kg
1440	1385	1715	827

Power supply	Total power installed	Air consumption for work cycle	Working pressure
3F - 380÷415 V - 50 Hz	4,2 kW	30 NL/cycle	7 bar



Technical specifications:

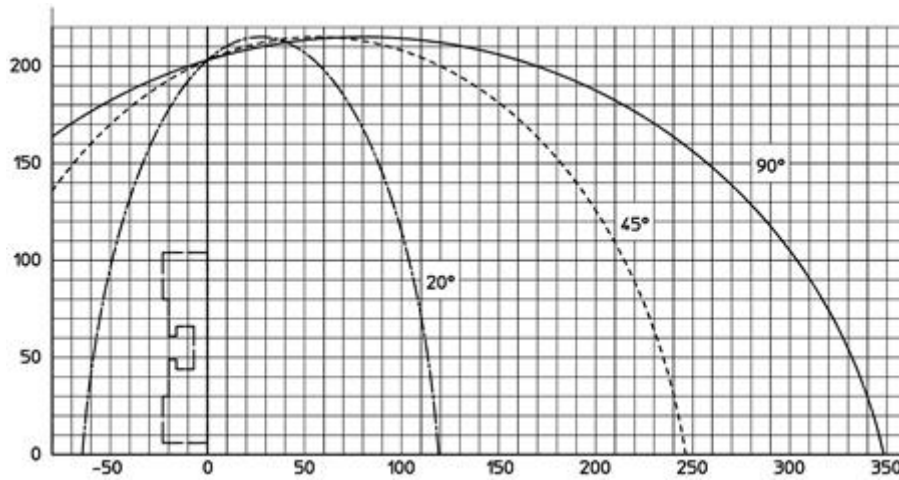
- Grades digital display (manual rotation)
- Hydro pneumatic advance of the blade (adjustable blade exit speed – quick return)
- Rotation from 20° Lh to 20° Rh on vertical axis
- Motor transmission by belt
- Machine and turntable structure in stabilized cast iron
- Turntable rotation on bearings and rollers that guarantees maximum long term precision
- Customised devices to clamp special profiles (on request)
- Working pressure: 7 bar
- Saw blade motor, three phase (4 kW) – 2800 rpm eurovoltage 230/400 V– 50 Hz; 275/480 V – 60 Hz
- Minimum quantity lubrication (MQL) with pure oil
- Set up for the extraction of chips and fumes

Standard accessories:

- Ø 550 mm tungsten carbide saw blade
- 1 horizontal vice (with swinging movement)
- No. 2 vertical vices
- Pressure regulator for vices with pressure gauge
- Integral safety casing for cutting area protection (pneumatic up-feed)
- Grades digital display (manual blade turning)
- Compressed air gun with spiral hose
- Packing with heat-shrink plastic bag

CUTTING DIAGRAM

See attachments

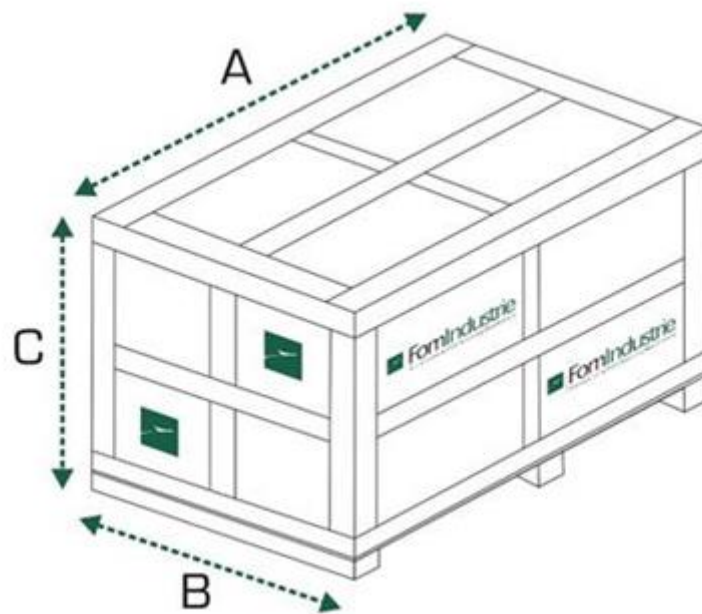
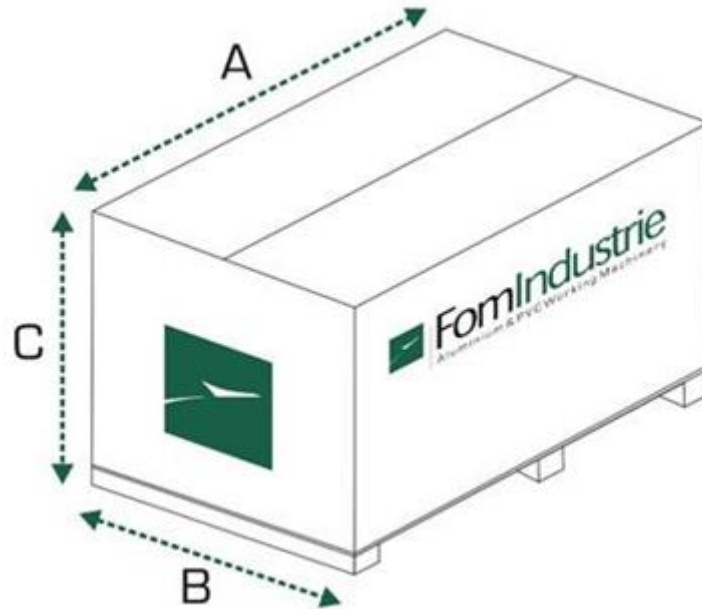


Optionals:

- Plan of union between PANDA 550 or PANDA 550 THETA with unloading roller conveyor ASSOMAK 400 VS or ASSOMAK 400 BRAIN or RULLIERA 400
- Additional horizontal vice
- QUOTA BASE Discharge roller table + stop, 3 m
- QUOTA BASE Discharge roller table + stop, 4,2 m
- QUOTA BASE Discharge roller table + stop, 6 m
- PORTER Infeed roller table + vertical rollers 4,2 m
- PORTER Infeed roller table + vertical rollers 3 m
- Additional roller for roller table
- Additional charge for special voltage and cycle (Standard motor 230/400V three-phase 50HZ)
- Additional charge for electrical version UL-CSA

Optional: Packing

- Carton packing
- Crate packing



Carton packing			
A (mm)	B (mm)	C (mm)	Kg
1510	1430	1720	847
Crate packing			
1510	1430	1720	944