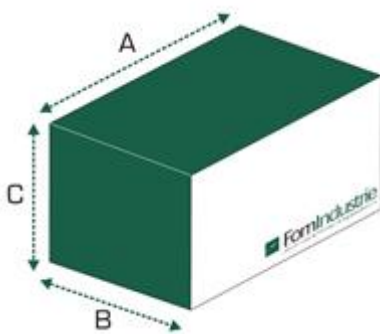


# BAIHA L

Corner assembly machine (crimping machine)



CE



A (mm)	B (mm)	C (mm)	Kg
850	880	1500	420

Power supply	Total power installed	Air consumption for work cycle 42 NL/cycle	Working pressure 7 bar
--------------	-----------------------	---	---------------------------



### Technical specifications:

- Internal crimping force multiplication cam system, capable of developing Thrust force of the crimping blades Kg. 5000 at 7 bars through pneumatic cylinder.
- Crimping positioning height from 0 to 180 mm
- Independent adjustment of the height of the two groups of blades. Position indicated by decimal display
- Possibility of crimping at two or three points
- Fold-away profile fence
- Simultaneous mechanical blades feed by means of a cog wheel system
- Blades stroke 16 mm
- Dimensions mm 880 x 850 x 1500 (h)
- Practical dashboard and swiveling

Dashboard



## Working capacity

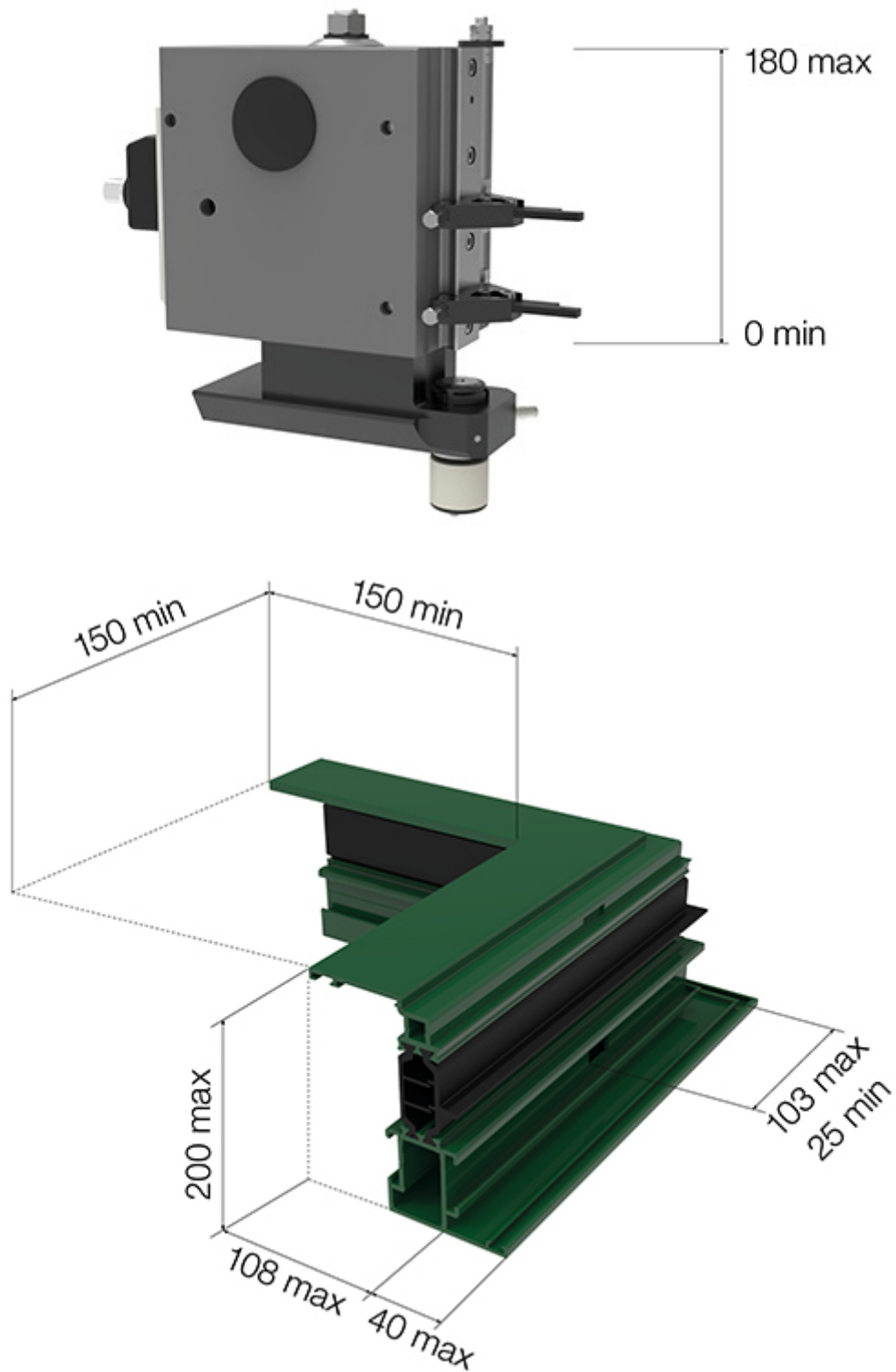


Diagram of the placement of standard tools at one point of crimping

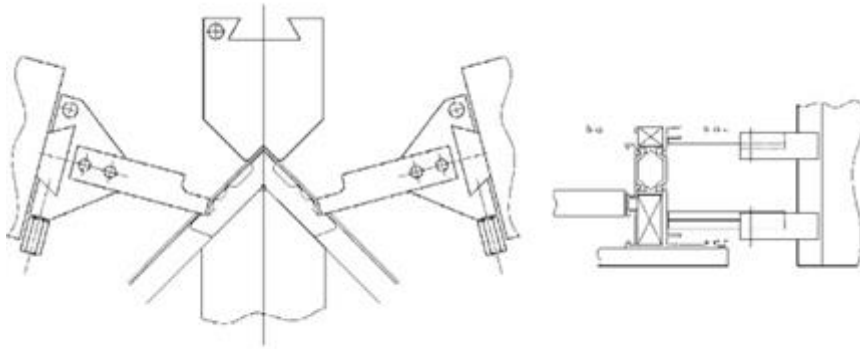
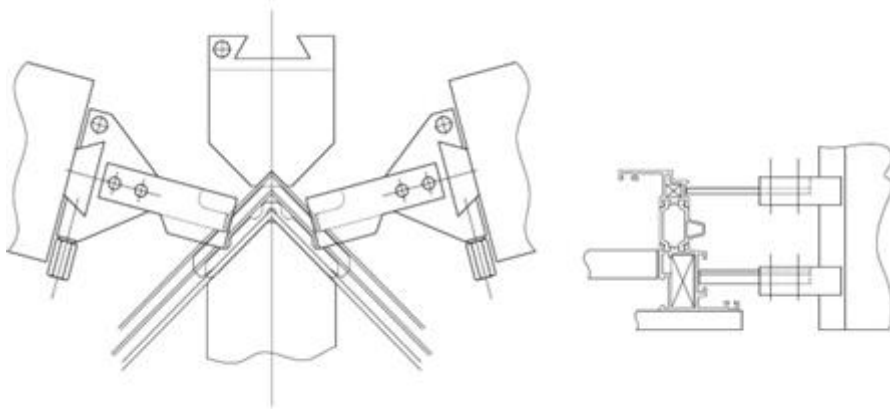


Diagram of the placement of special tools at two points of crimping

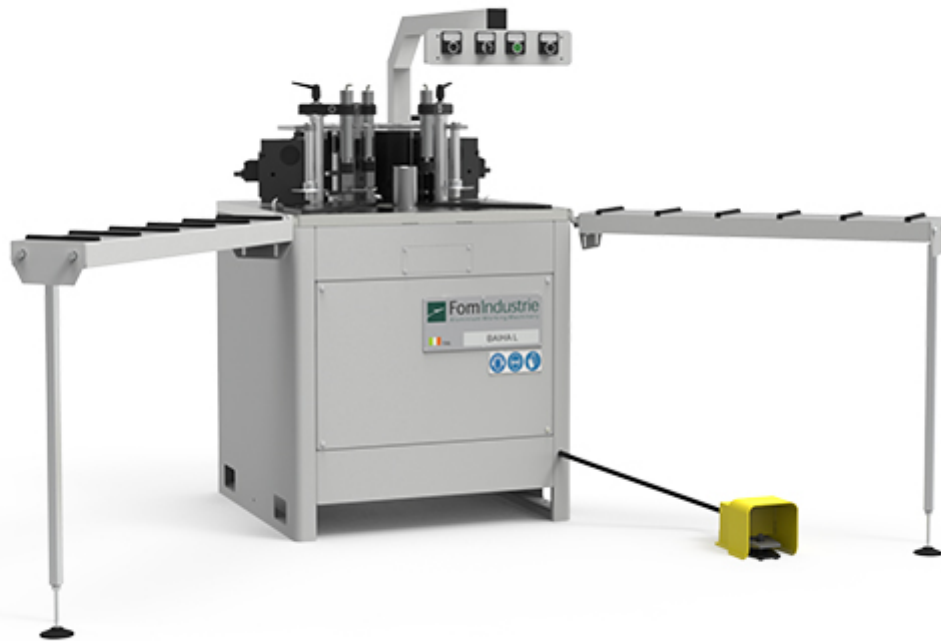


## Standard accessories:

- No. 2 right tool-holder
- No. 2 left tool-holder
- N° 2 knives 2 mm thickness
- No. 4 tools 5 mm thickness
- N° 2 fold-away profile fences

## Optionals:

- Additional right tool-holder
- Additional left tool-holder
- Additional tool 2 mm thickness
- Additional tool 5 mm thickness
- Swinging profile support
- Roller tables
- Special tool

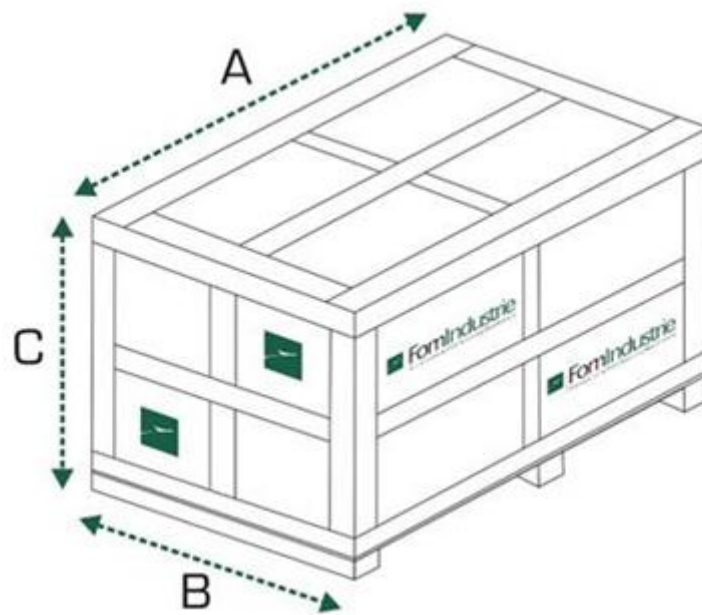
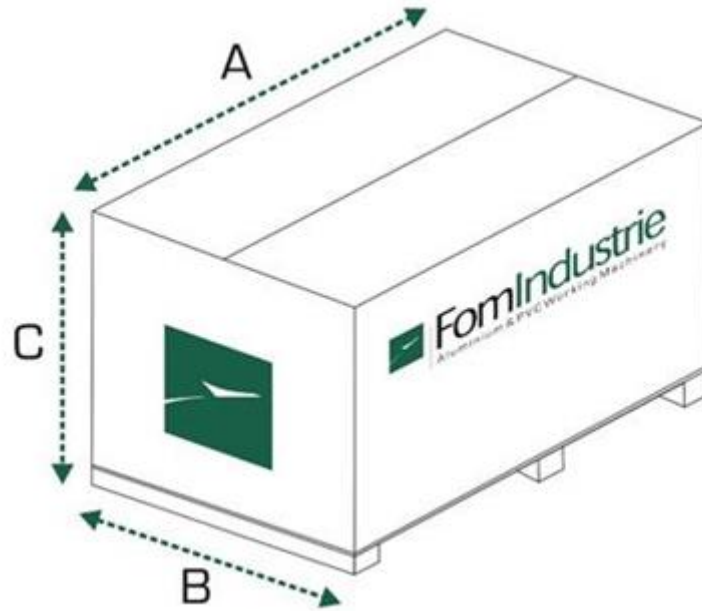


Machine with roller table kit (optional)

## Optional: Packing

- Carton pallet packing with heat-shrink plastic bag

Crate packing



Carton packing				
A (mm)	B (mm)	C (mm)	Kg	
1155	1080	1780	432	
Crate packing				
A (mm)	B (mm)	C (mm)	Kg	
1095	1075	1650	491	